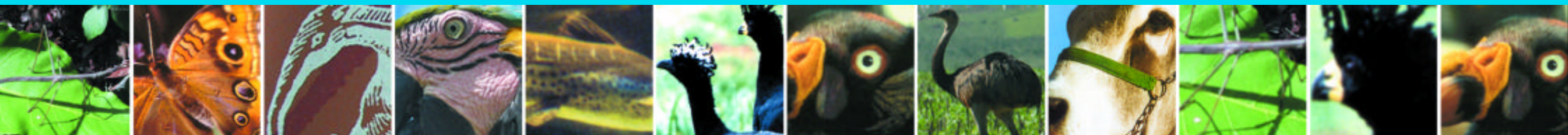


Fauna





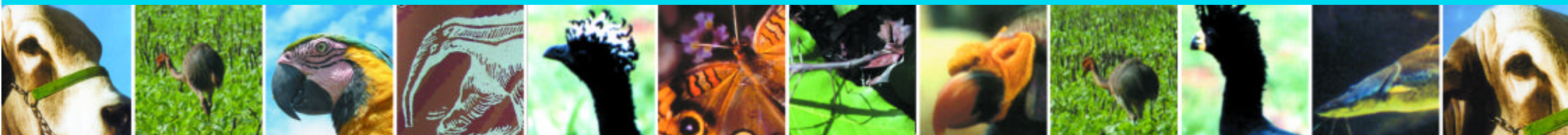
A fauna do cerrado, também prima pela biodiversidade. Ainda segundo a Conservation International, são 1.268 espécies de animais terrestres vertebrados, dos quais 117 deles endêmicos. Como principais destaques temos o solitário lobo guará; o rugido estrondoso e rouco do bugio (macaco guariba); as acrobacias do macaco prego; o aspecto engraçado do tatu-bola, a beleza do tamanduá-bandeira; a raposa, considerada a larapia do campo; o aspecto inocente da capivara; a velocidade do veado campeiro e a majestade da onça pintada. Dentre as aves, a ema, o gavião carcará, o juriti, os periquitos, o sabiá e o João-de-Barro. E o que seria do Goiás se não fosse o canto da seriema para nos lembrar que estamos no campo e longe da vida urbana?

Thiago Dias Amaral Ferreira

Bacharel em Turismo

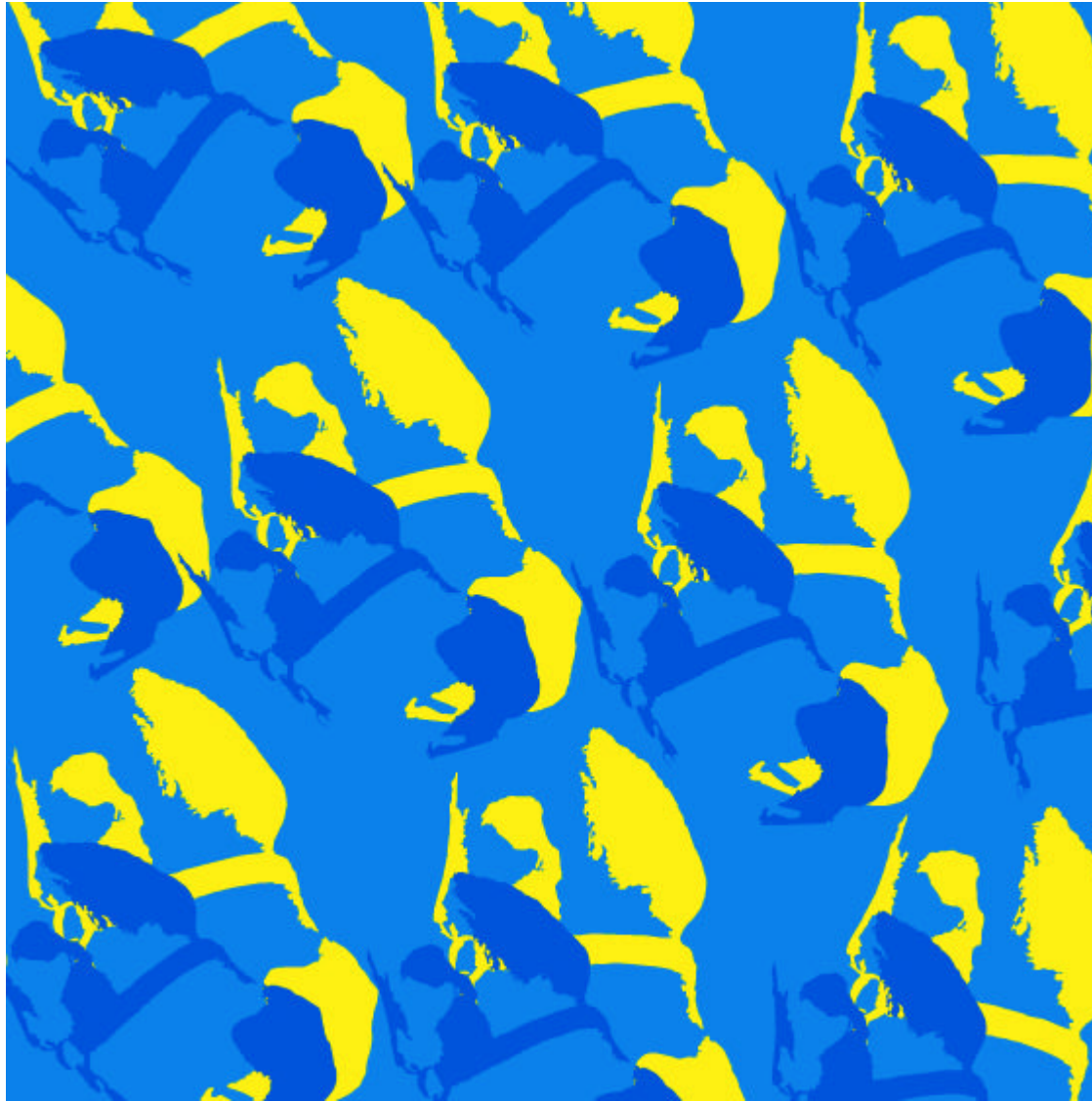
Marcos Martins Borges

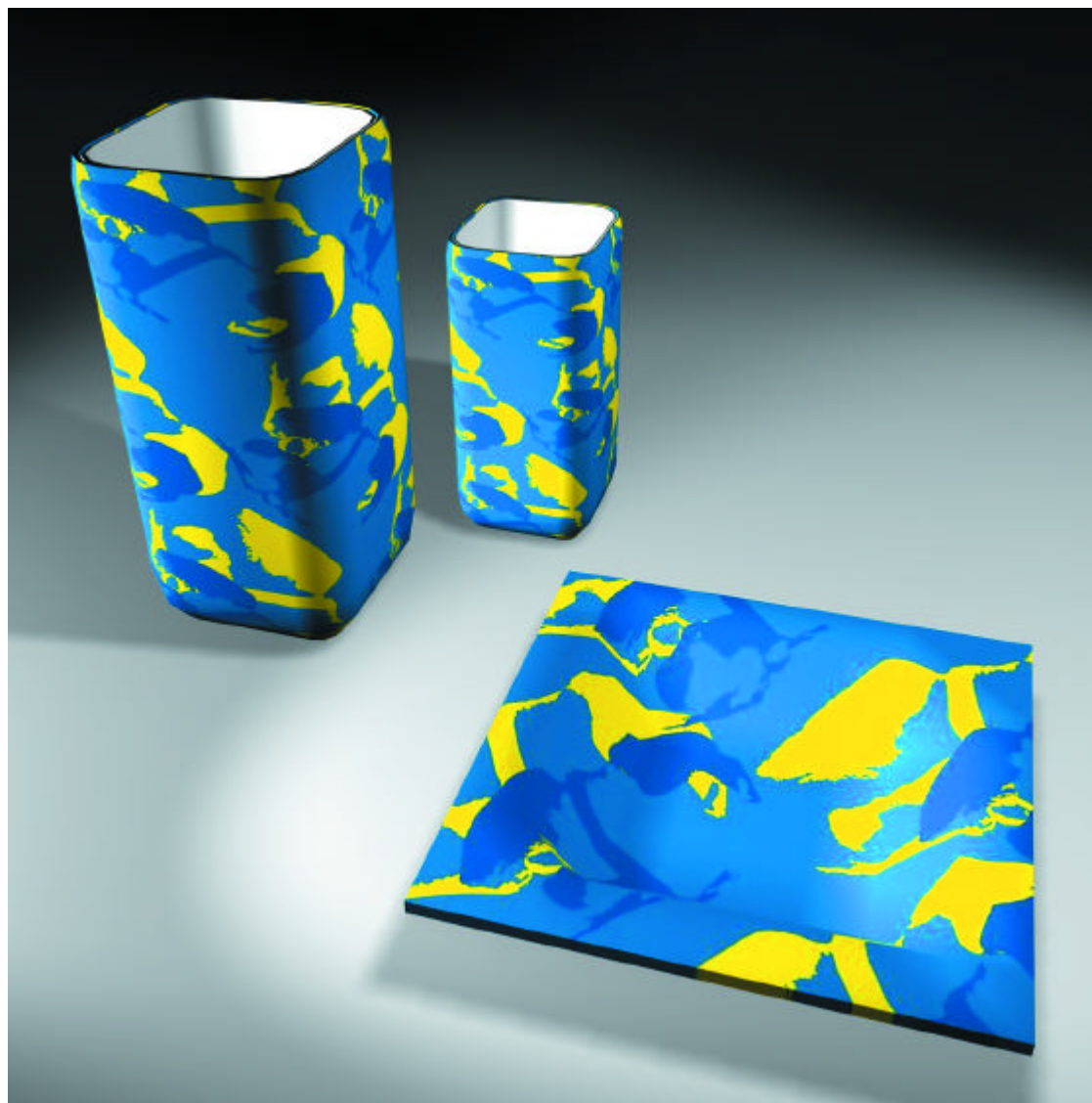
Mestre em Geografia



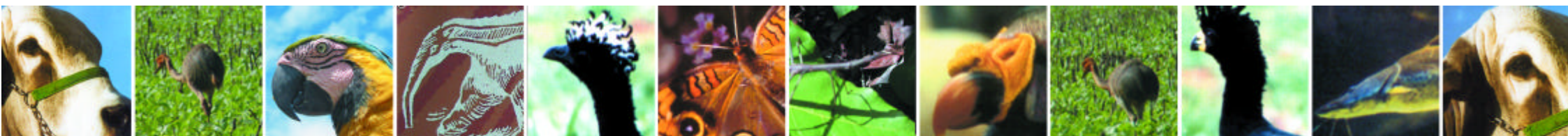
77
Touro
Raça Indu-Brasil

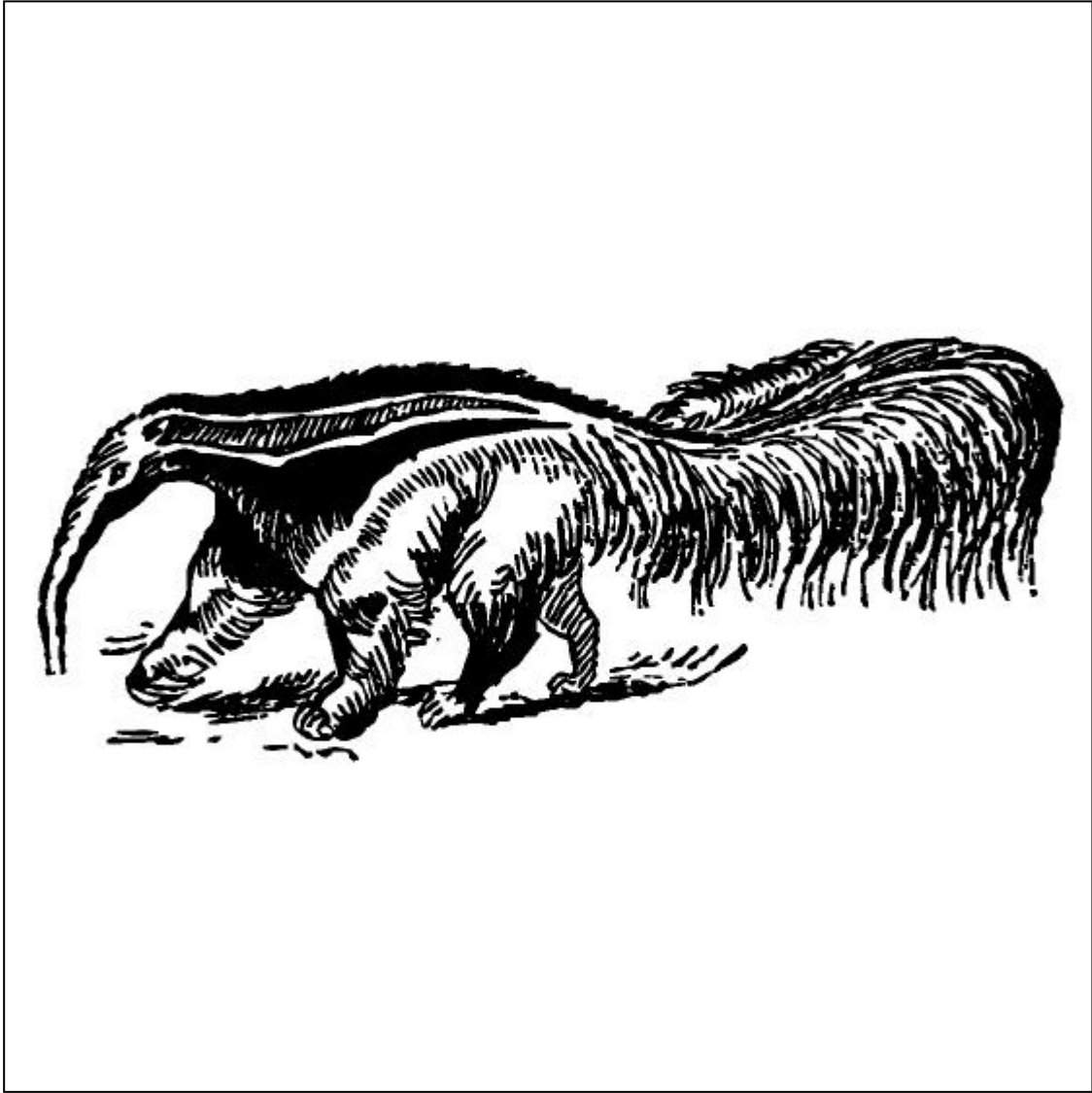






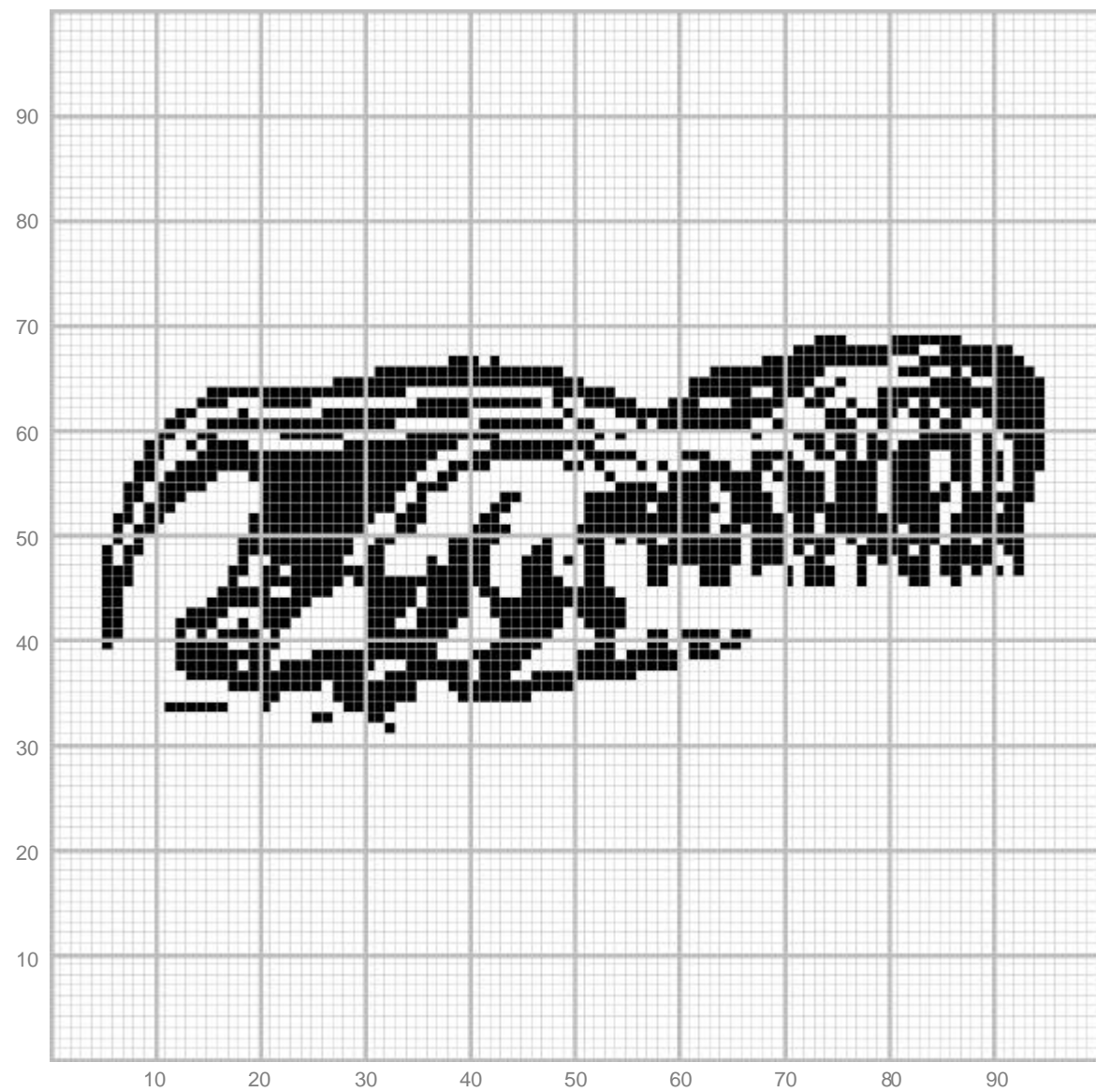
77
Aplicação volumétrica



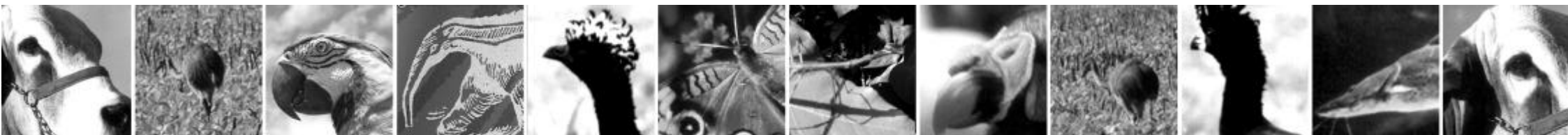


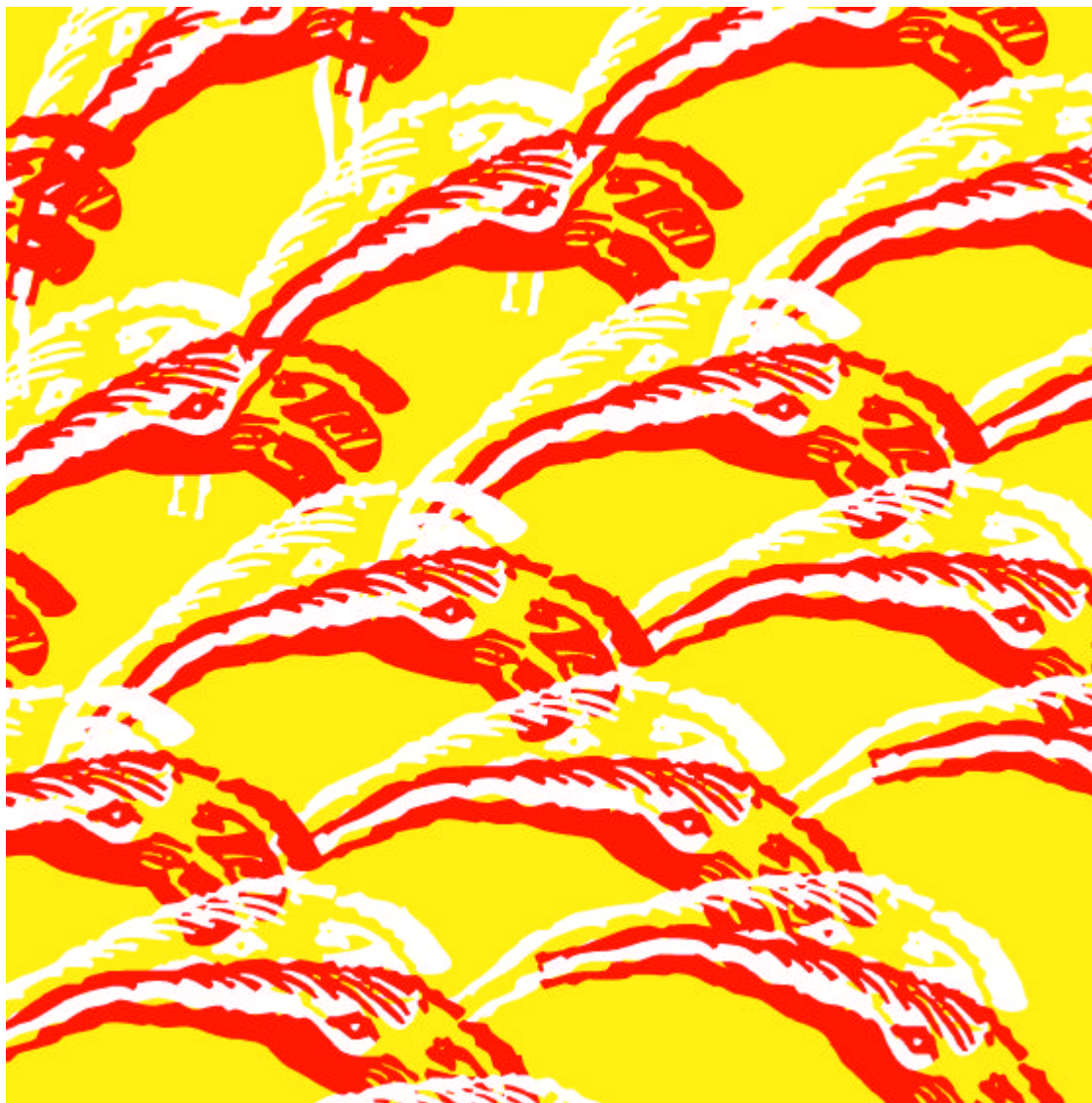
78

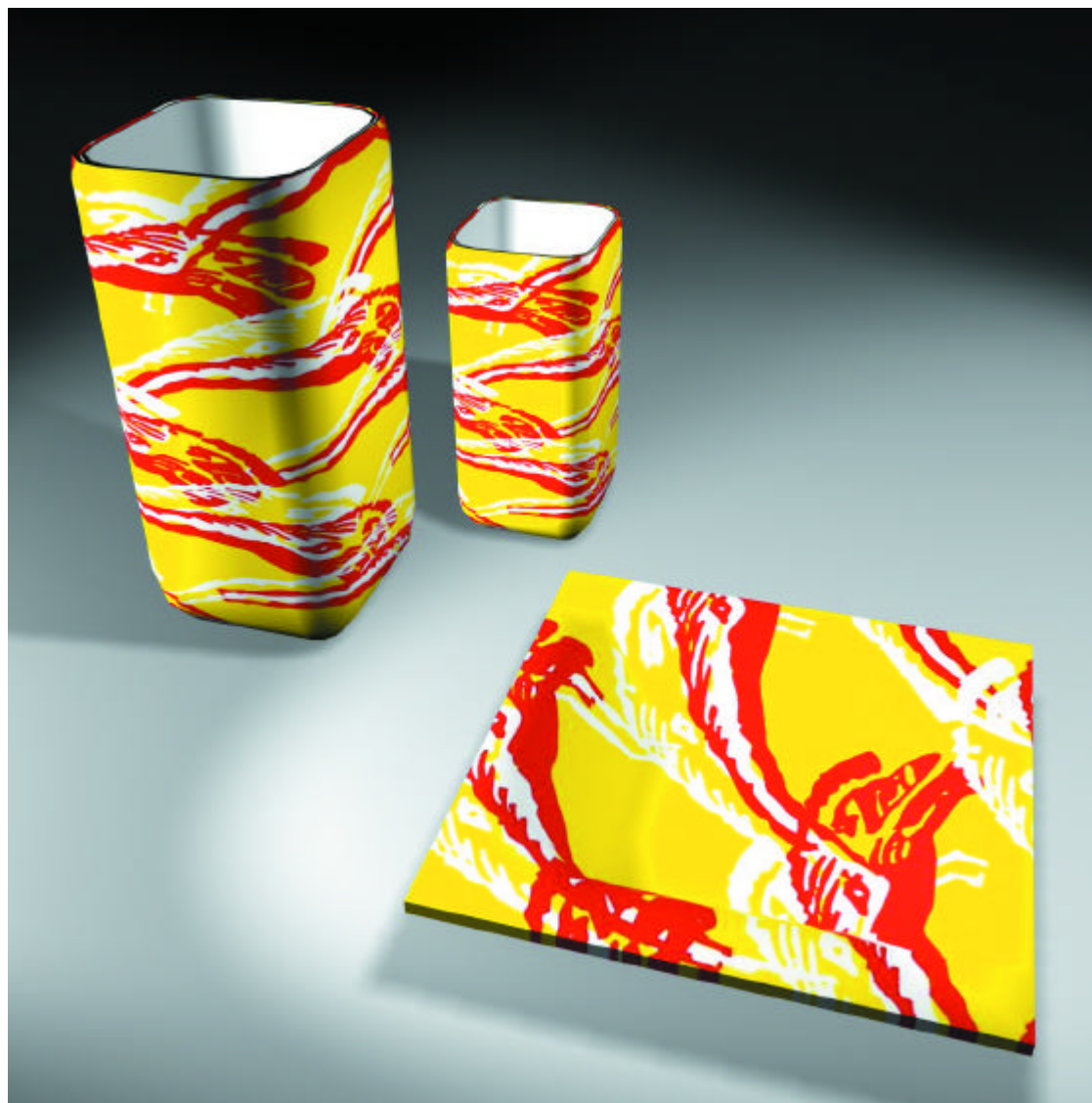




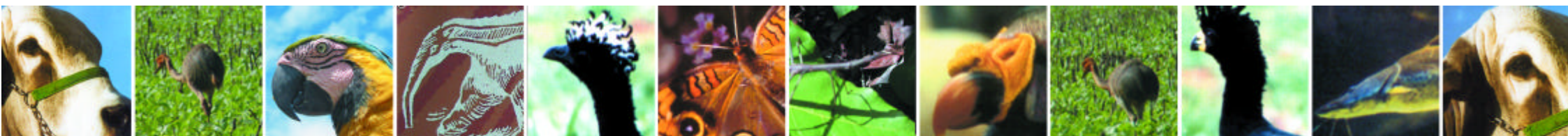
78
Aplicação têxtil



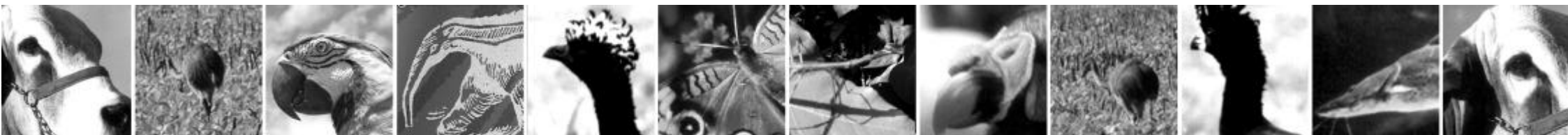
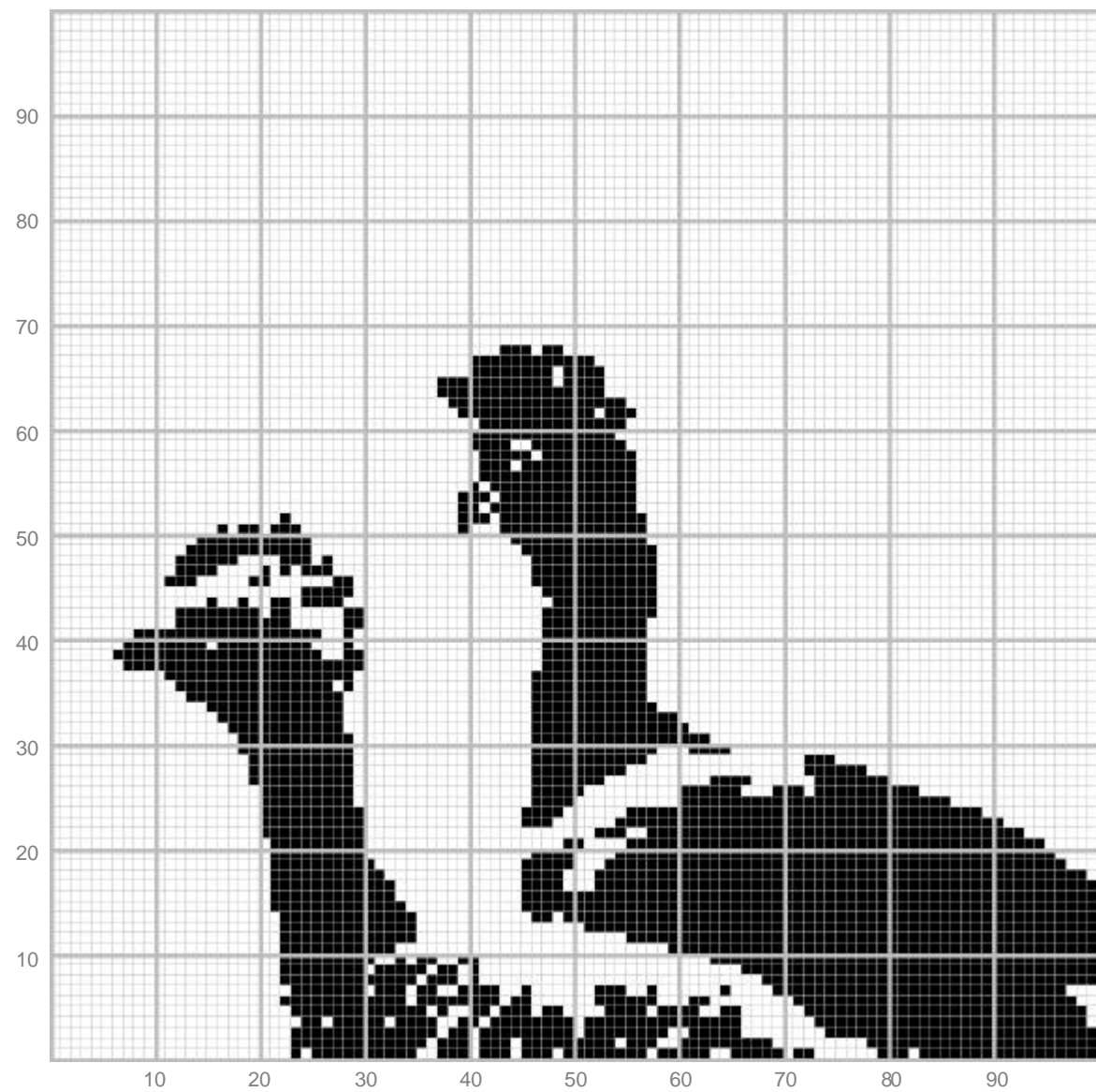


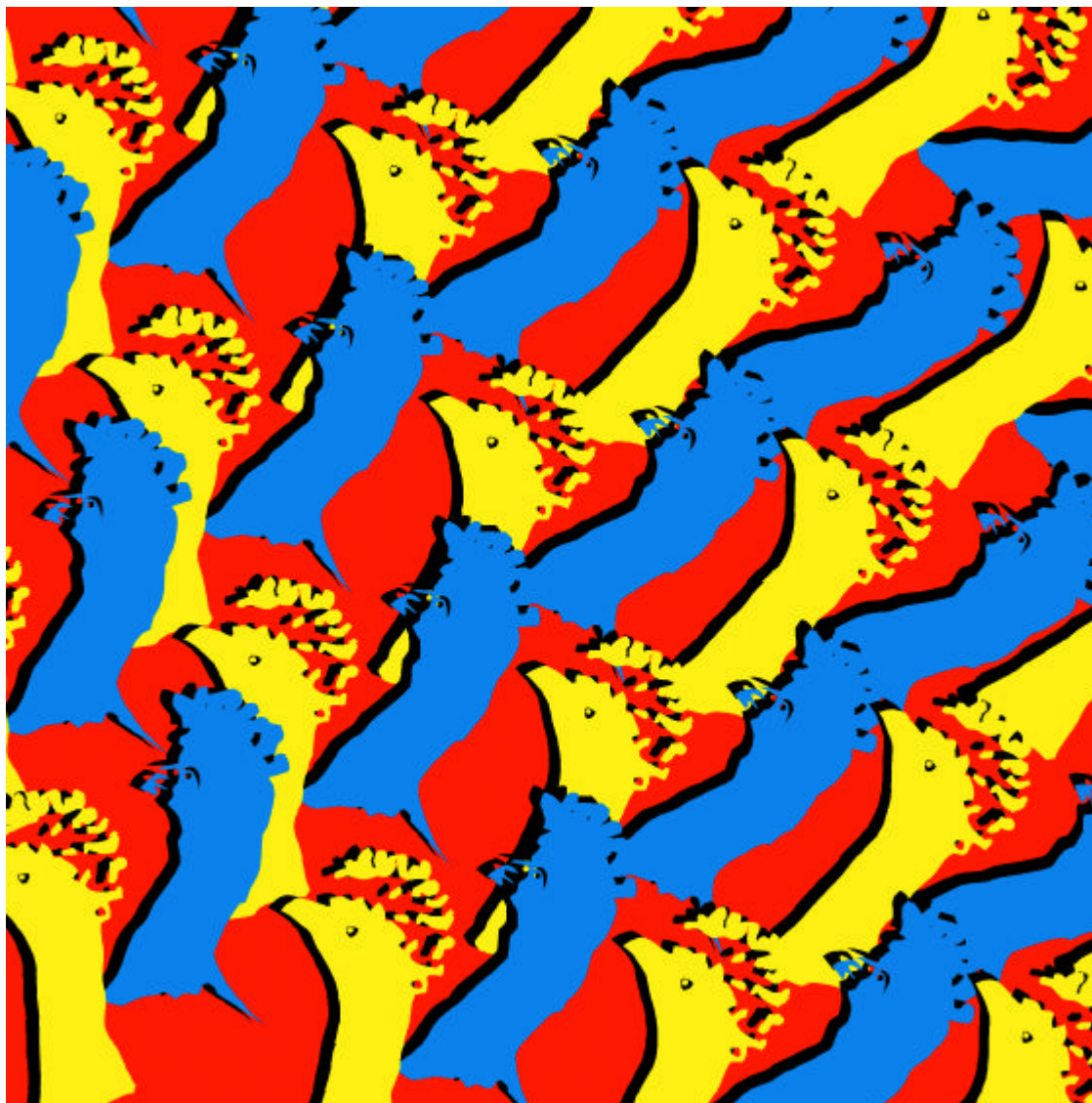


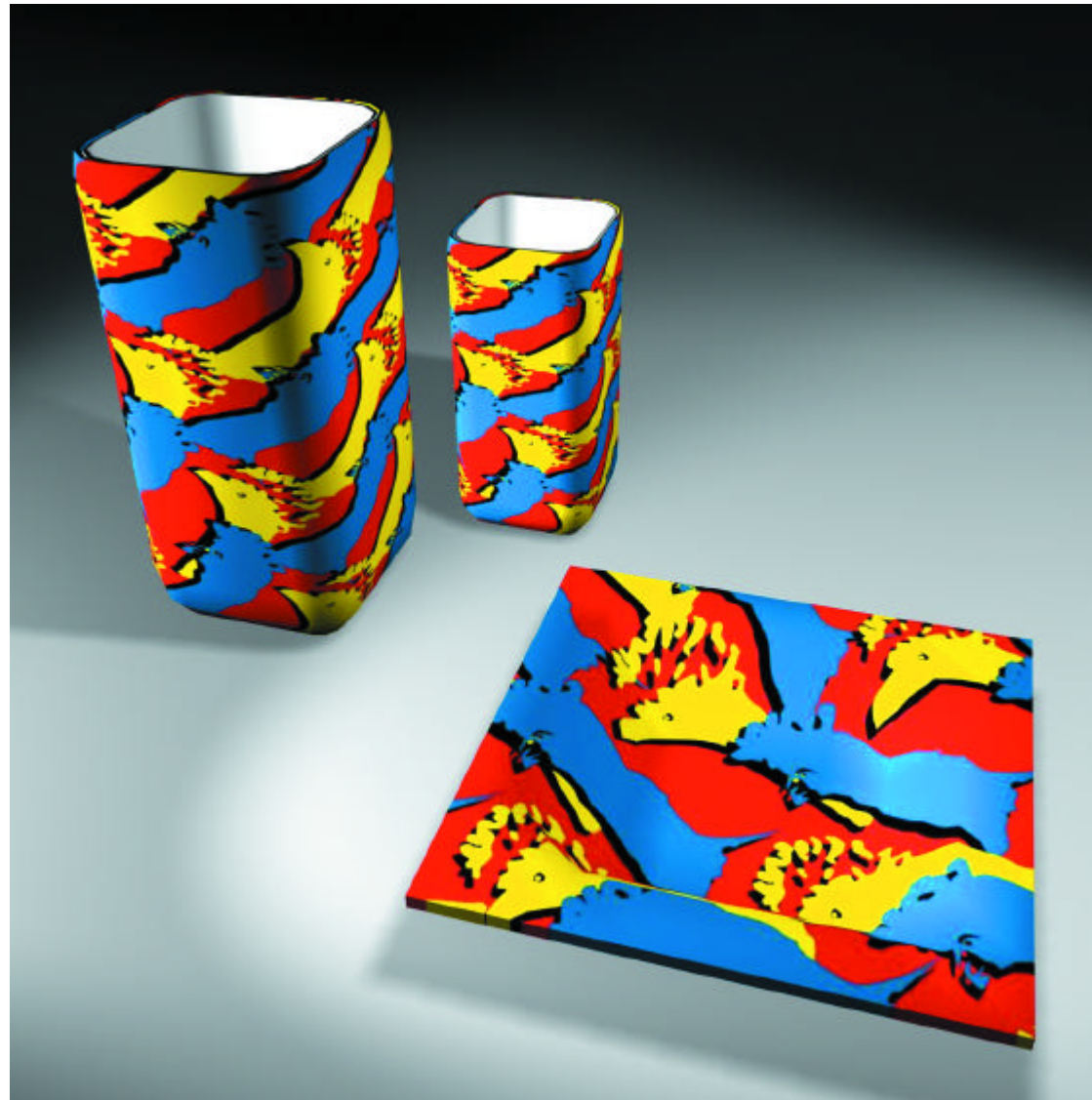
78
Aplicação volumétrica



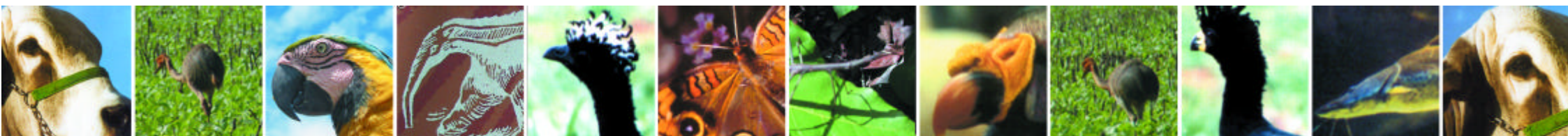




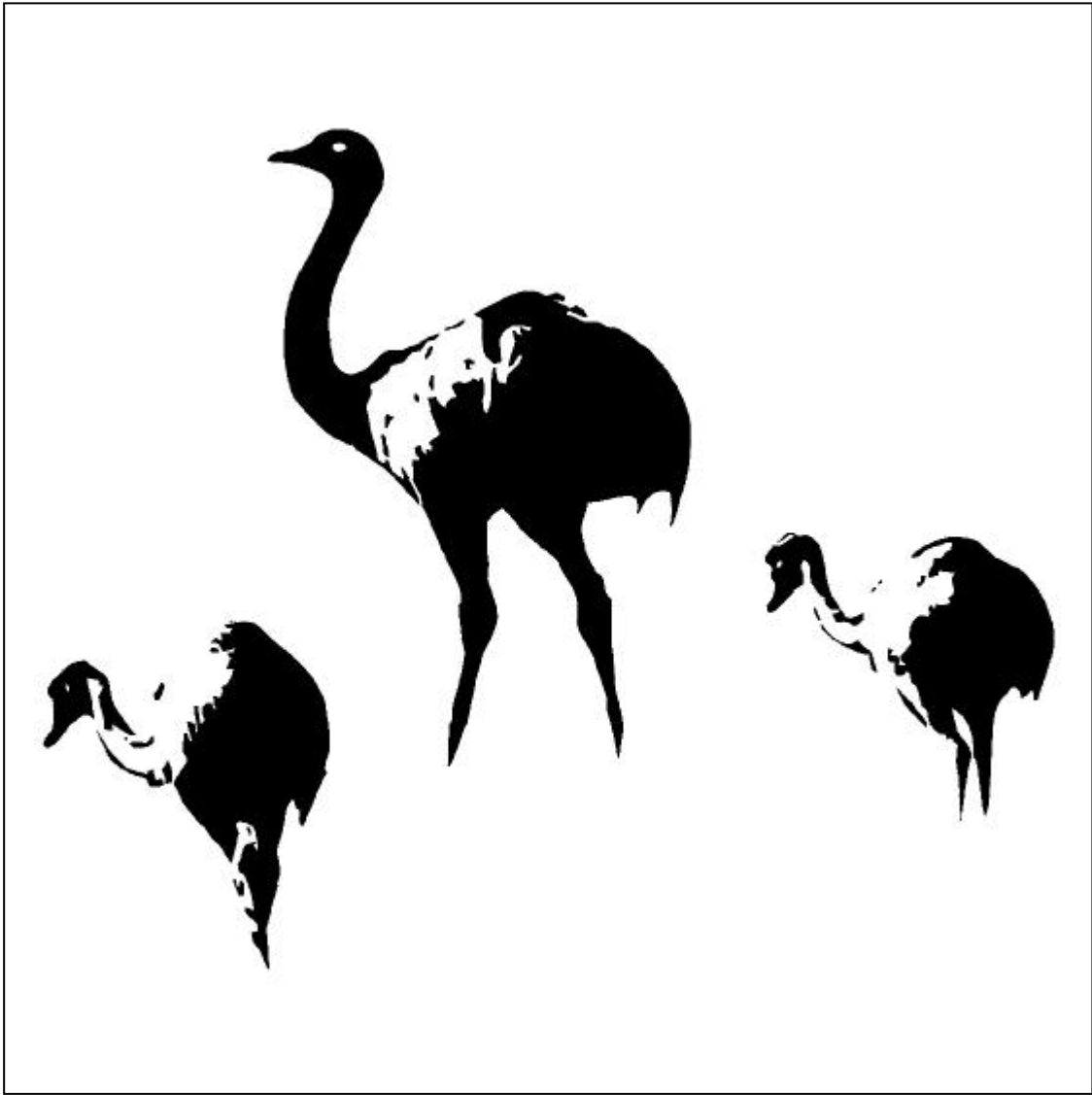


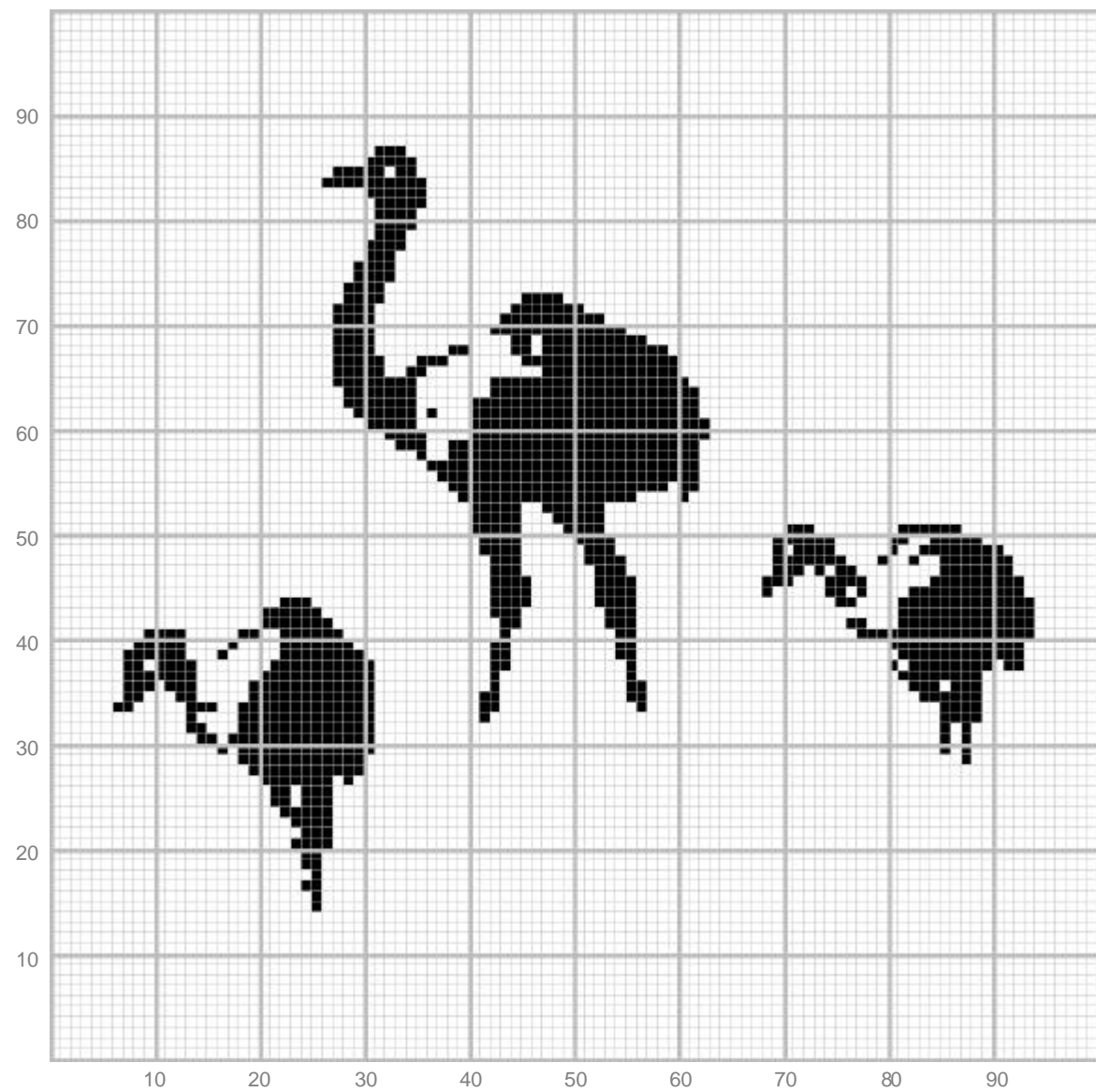


79
Aplicação volumétrica

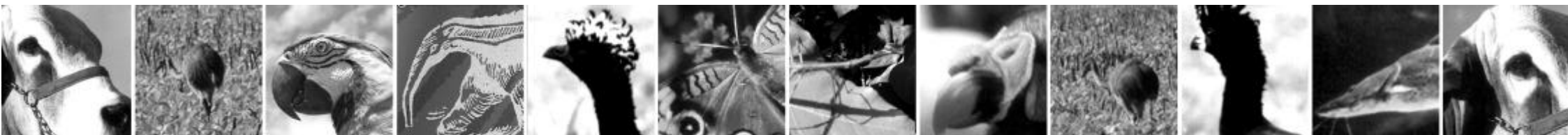


A black and white illustration of three ostriches. In the center is a large adult ostrich standing and facing left. To its left and slightly in front is a smaller ostrich, also facing left. To the right of the adult is another smaller ostrich, facing right. The ostriches are depicted with simple black outlines and some internal shading to suggest feathers. The background is plain white.





80
Aplicação têxtil

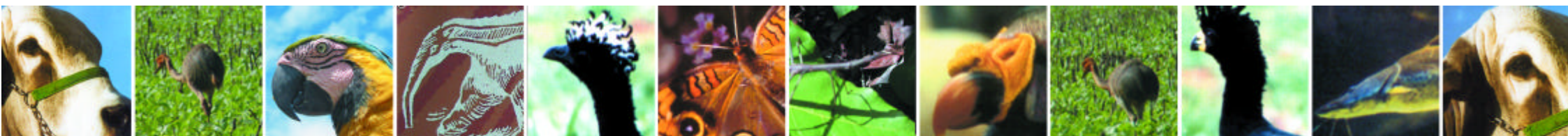


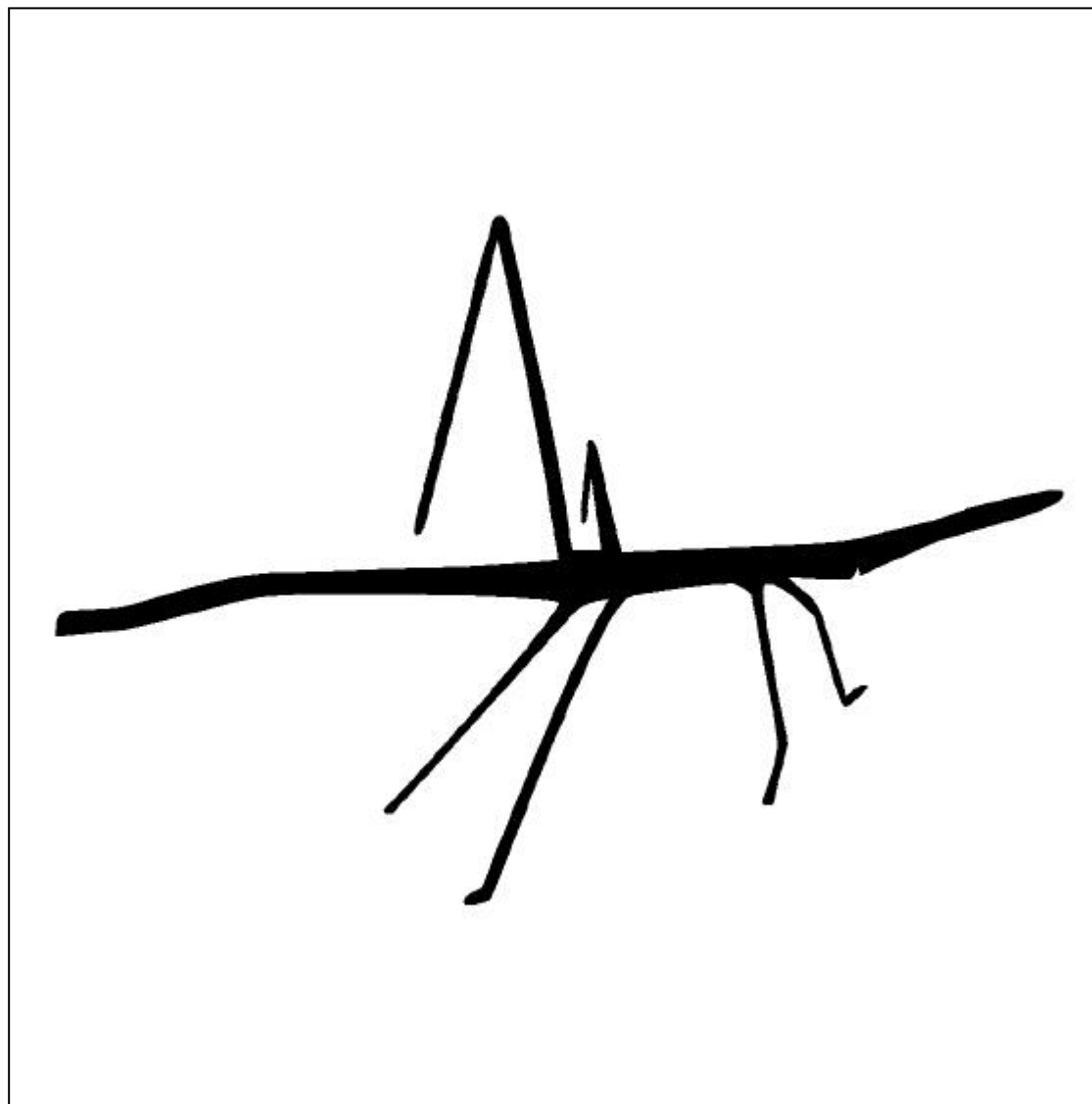
80
Aplicação em estampados





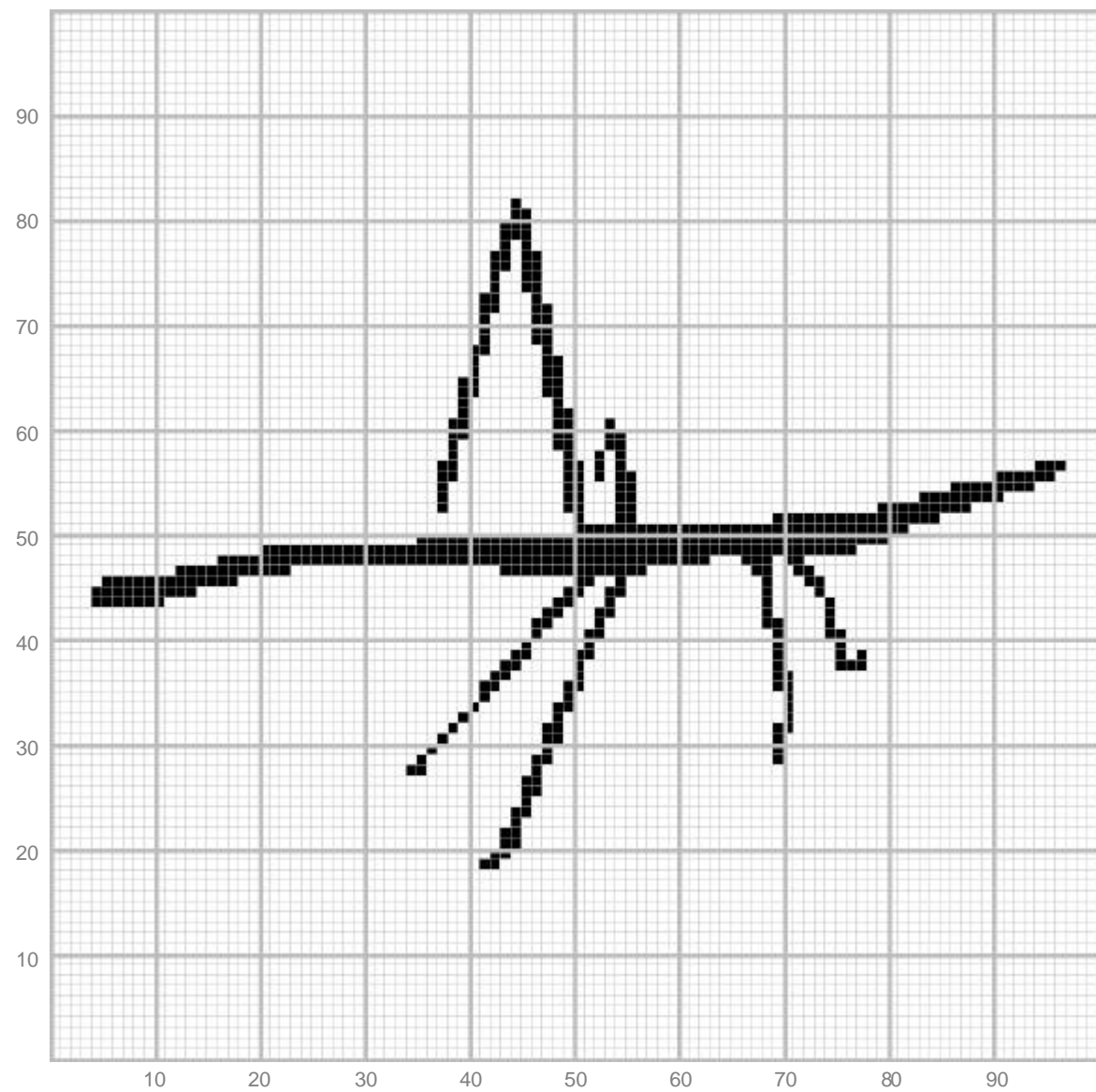
80
Aplicação volumétrica



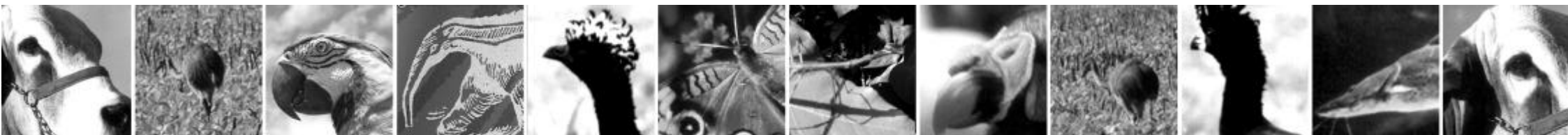


81
Bicho-pau
"Phasmatidae"

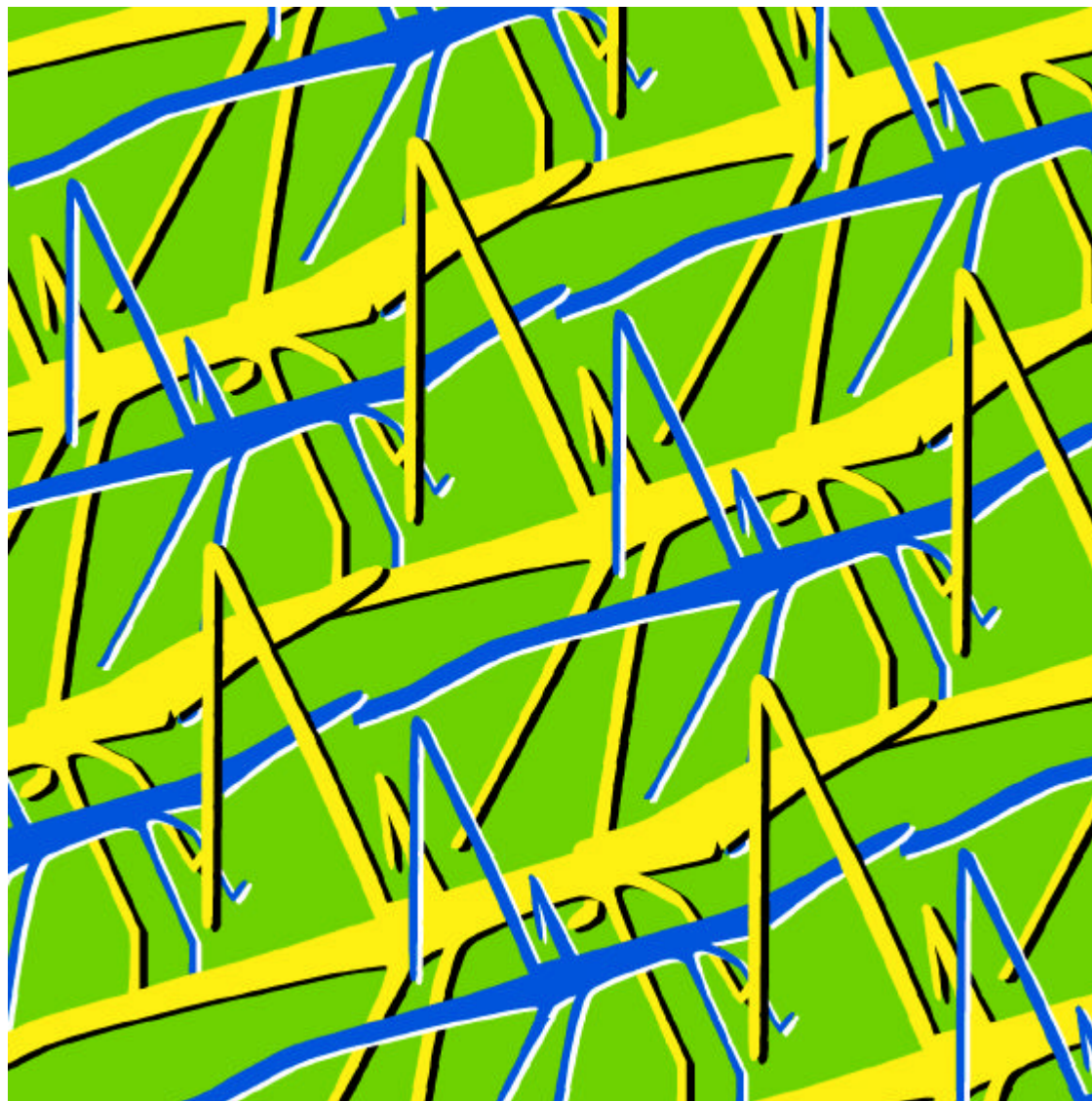




81
Aplicação têxtil

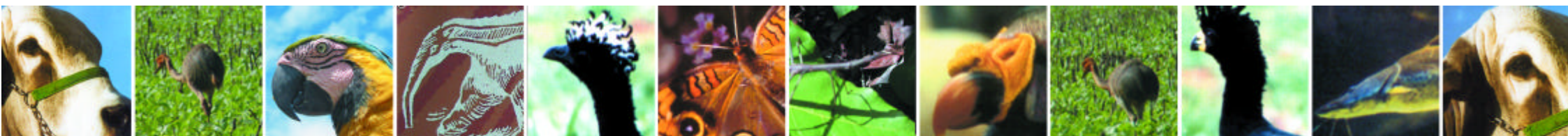


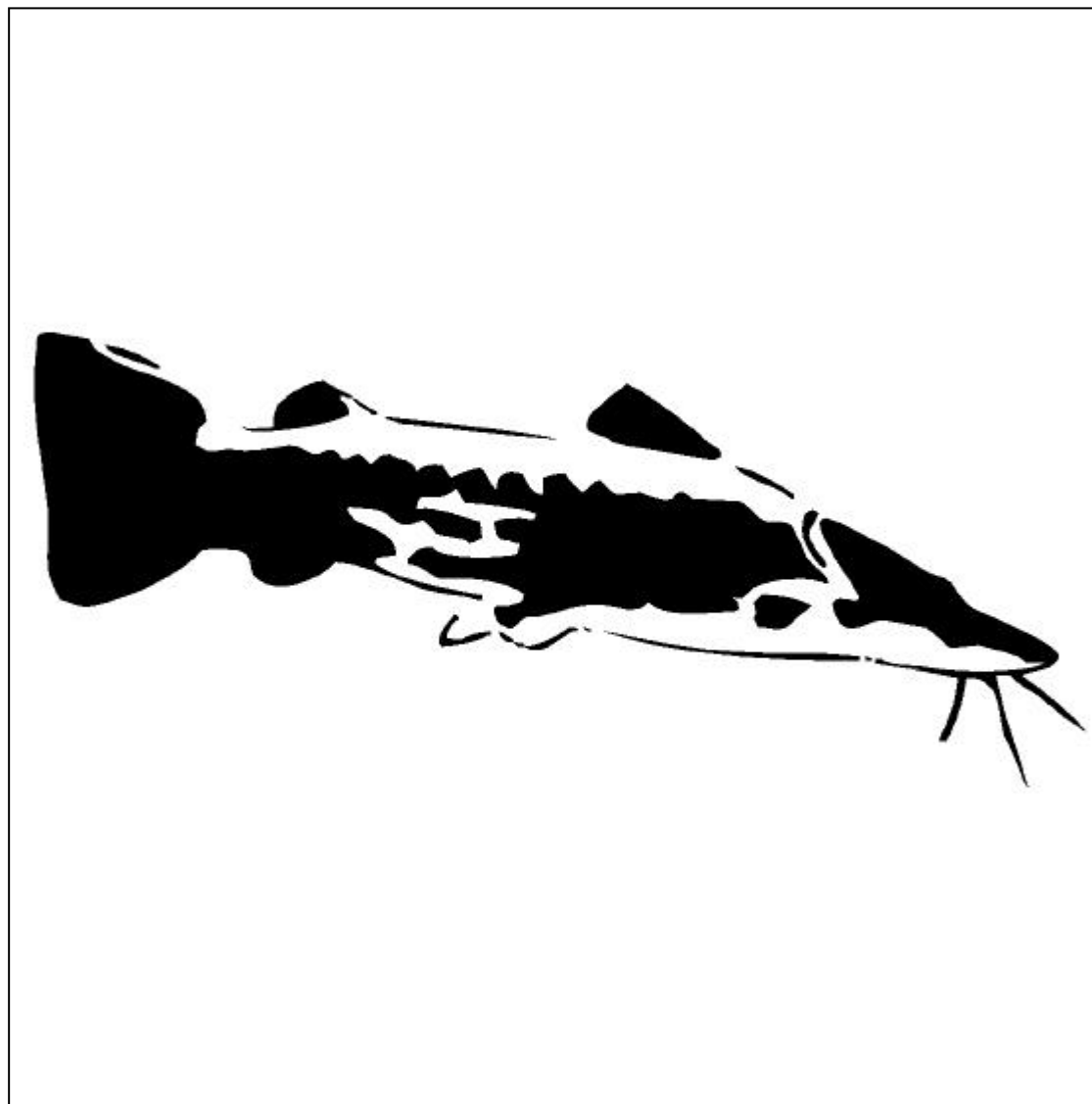
81
Aplicação em estampados





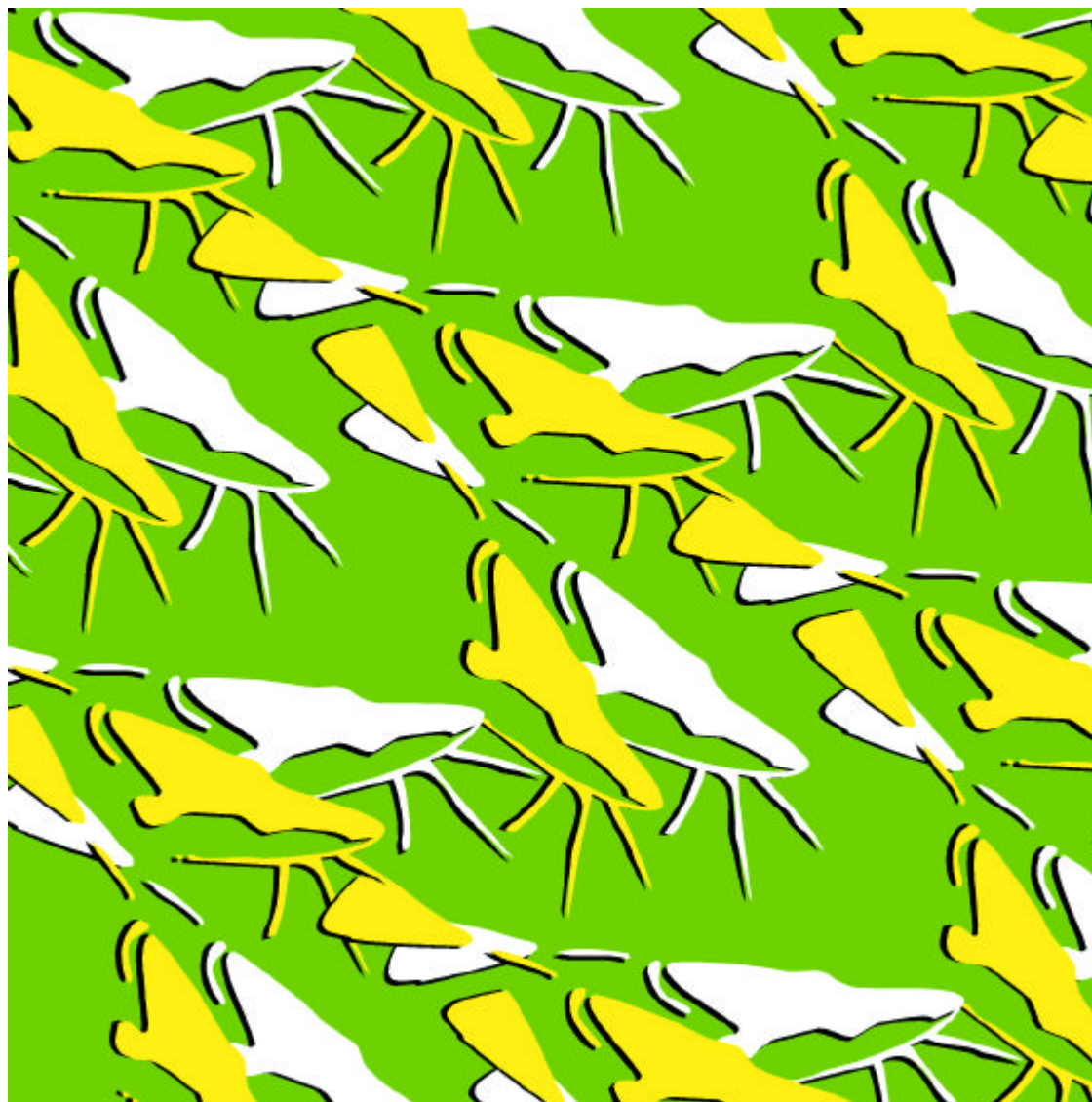
81
Aplicação volumétrica





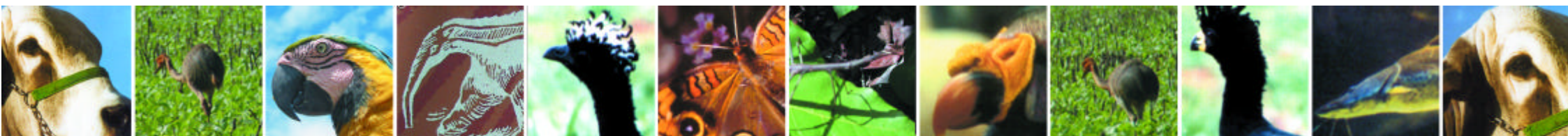
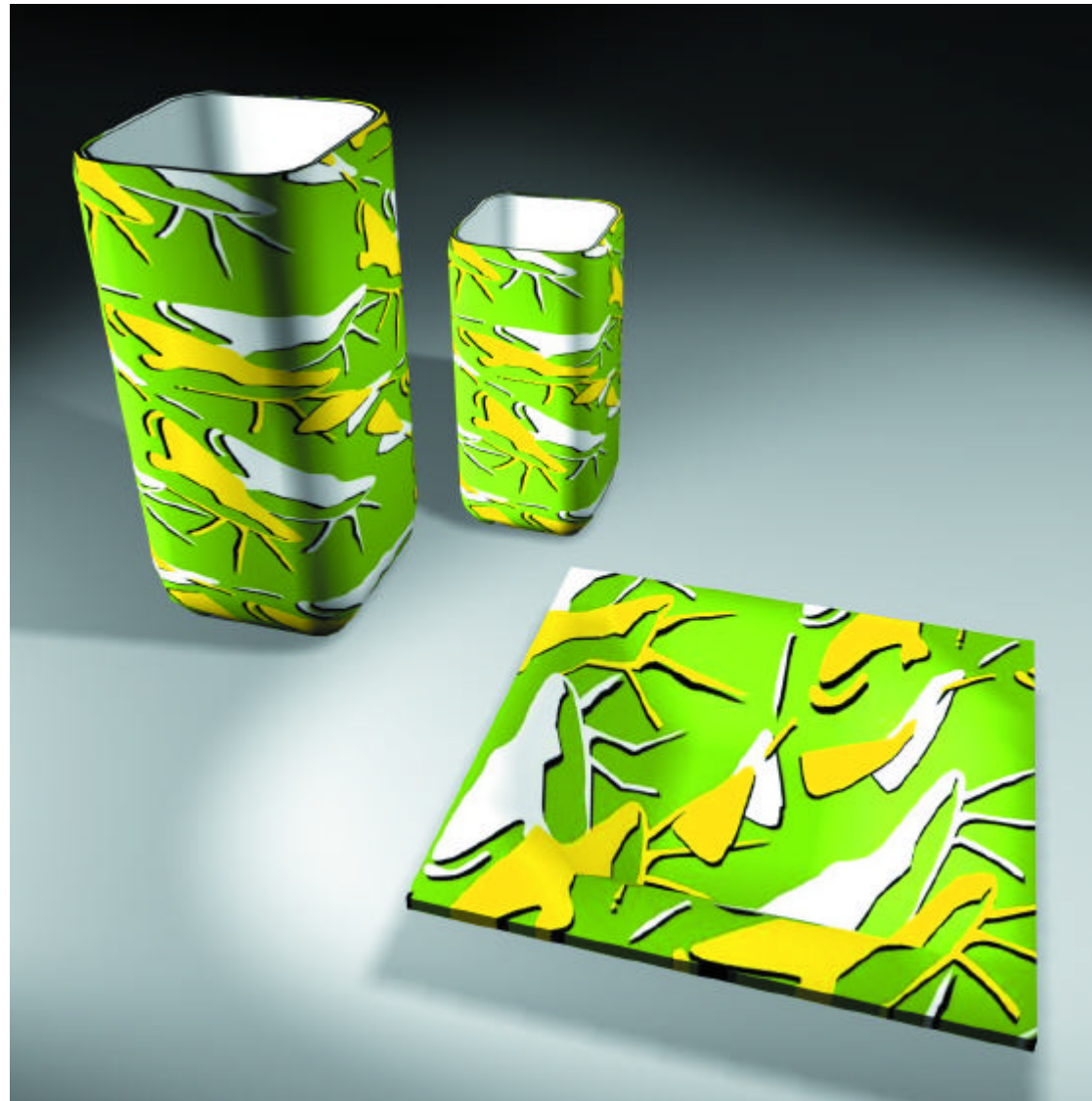
82
Pintado ou Surubim
"Pseudoplatystoma fasciatum"





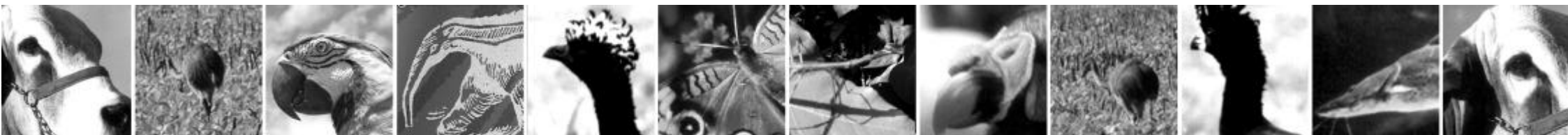
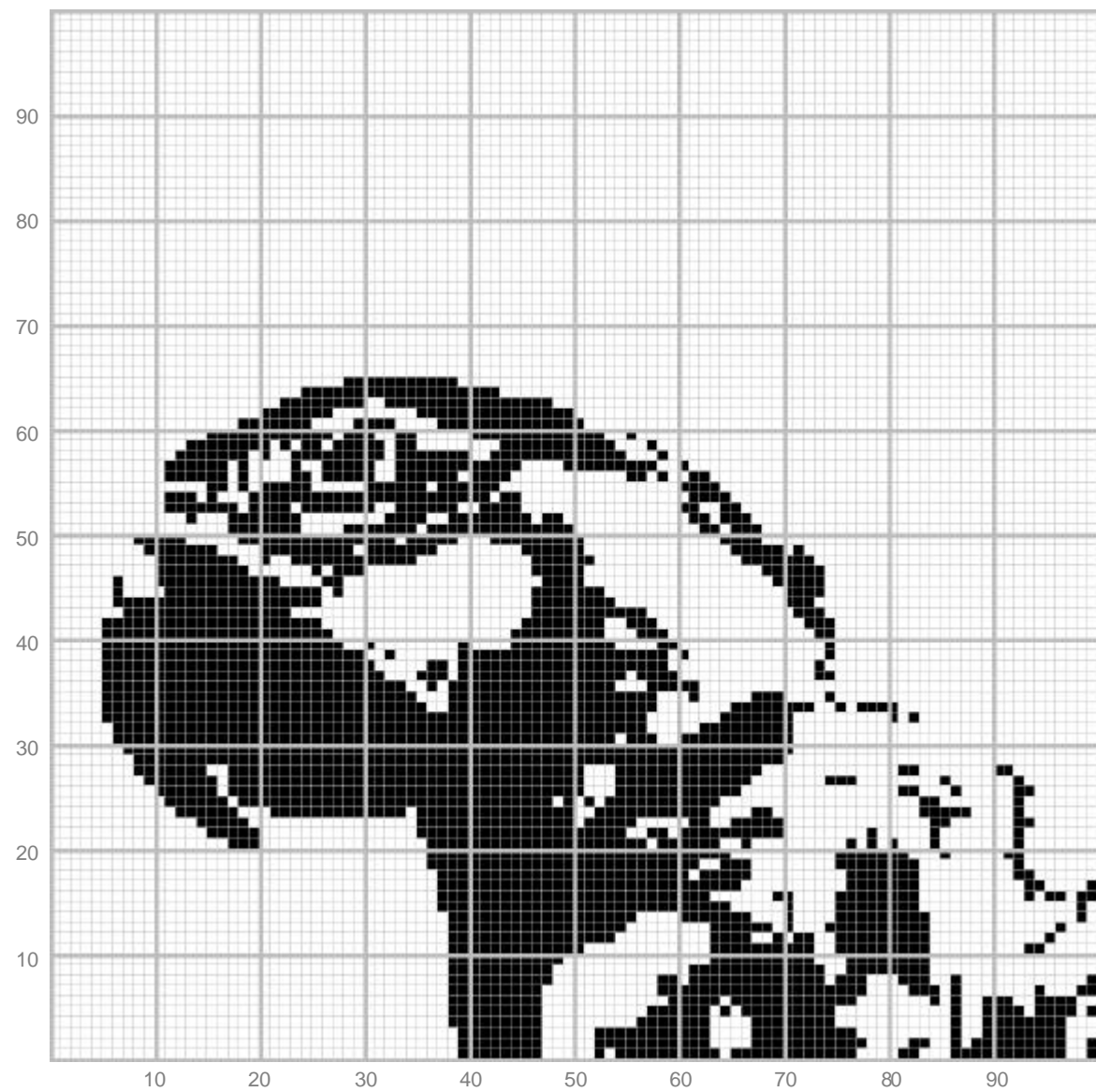
82
Aplicação em estampados

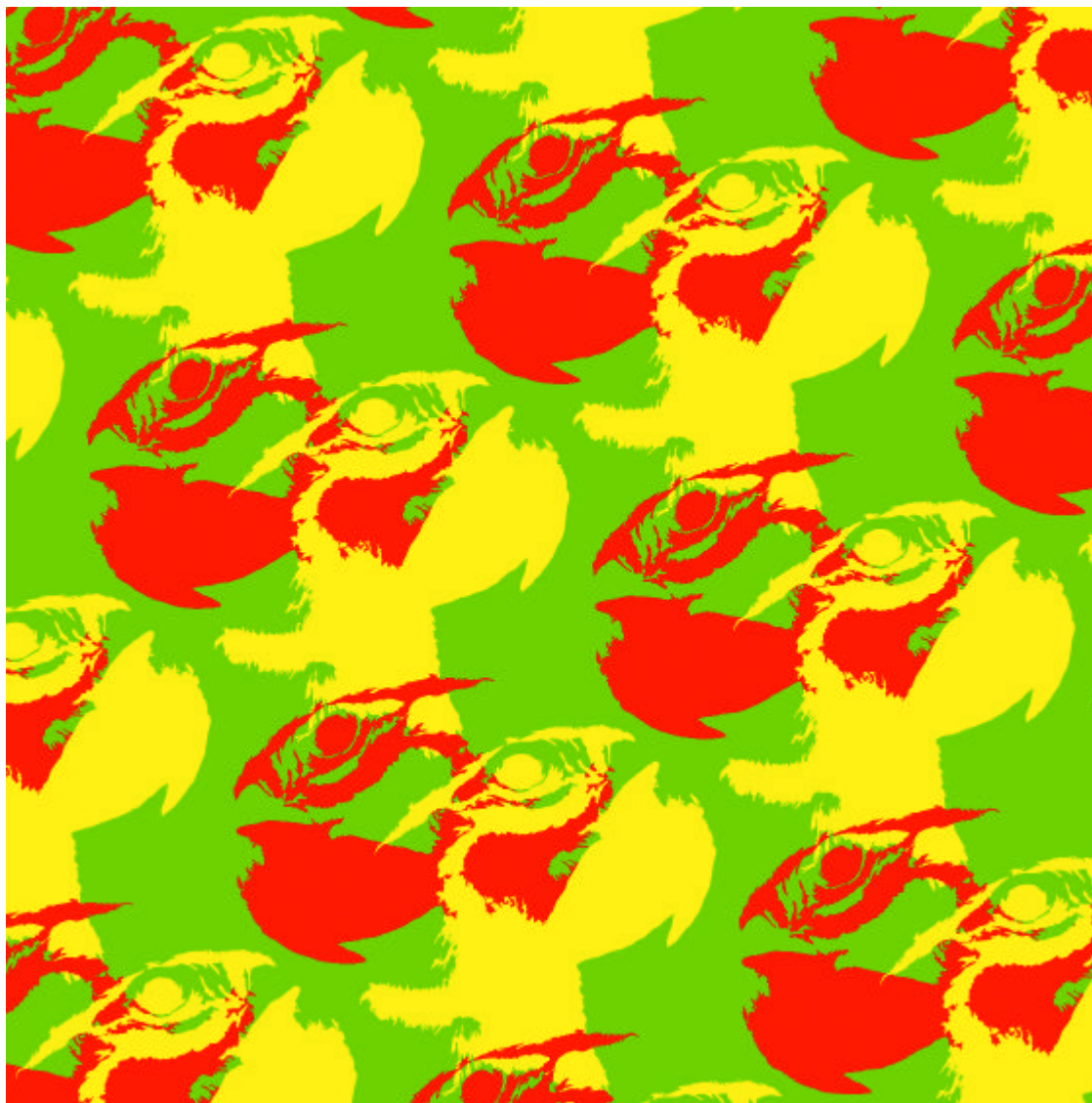


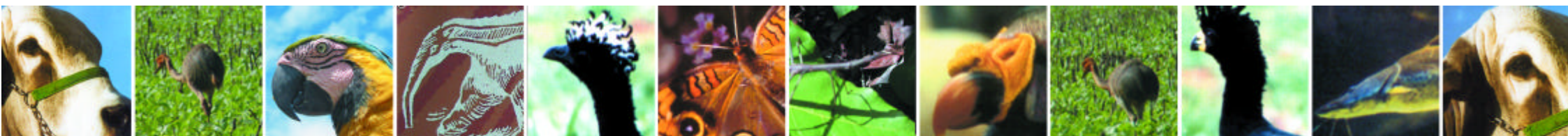
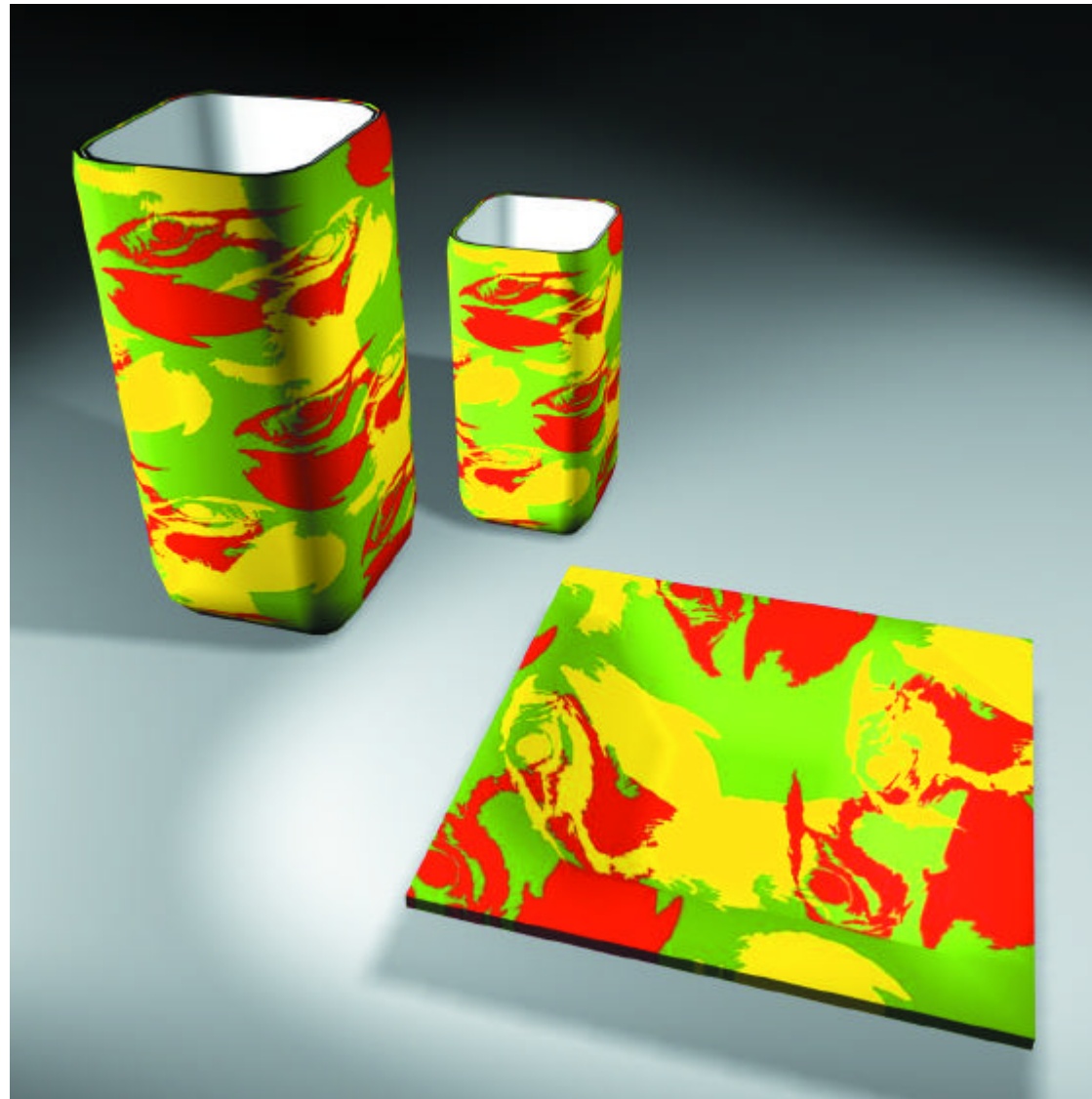


A black and white photograph of a parrot, likely a macaw, perched on a branch. The parrot is facing left, with its head slightly turned towards the viewer. It has a large, dark, hooked beak and a prominent crest of feathers on its head. The feathers on its body show a mix of dark and light patterns, possibly blue and white. The background is dark and out of focus, showing some foliage.



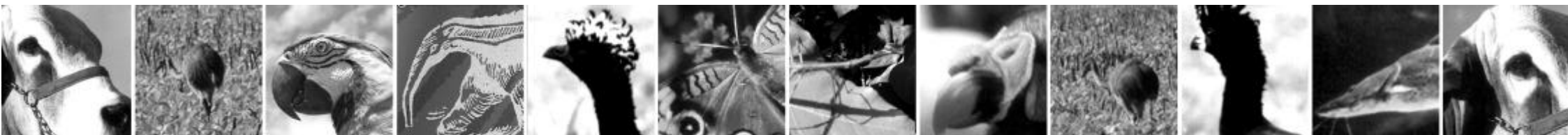
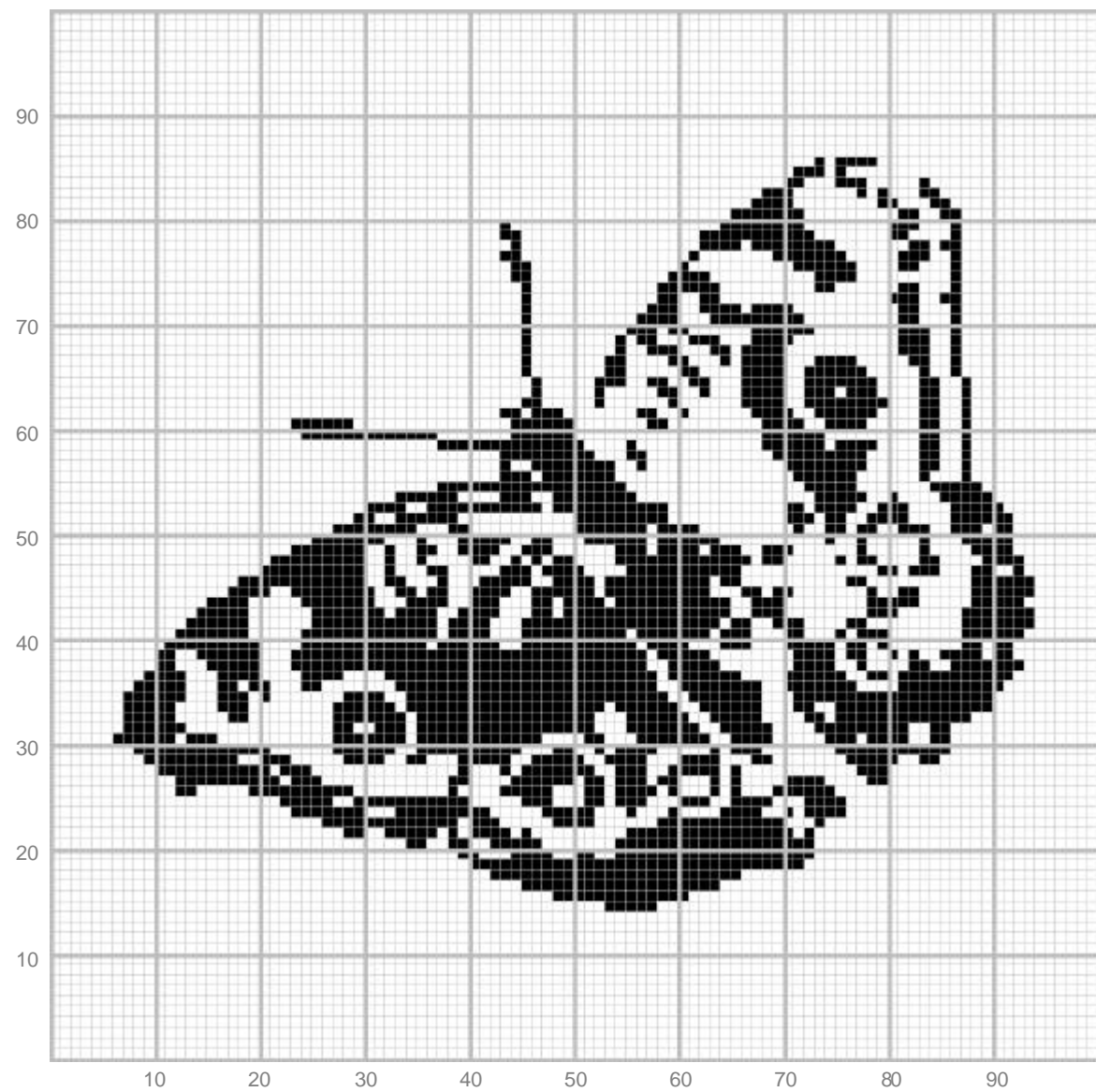


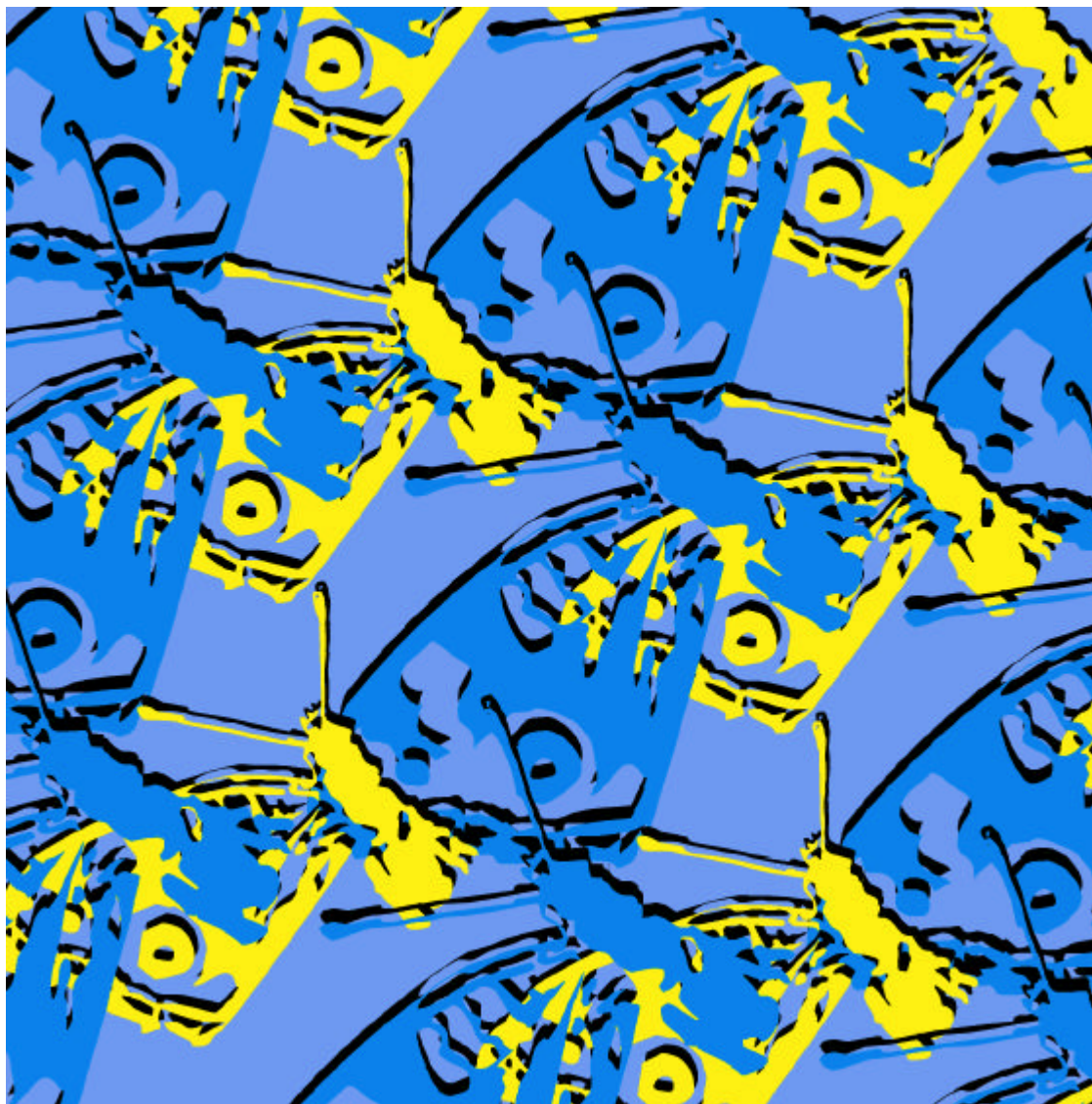


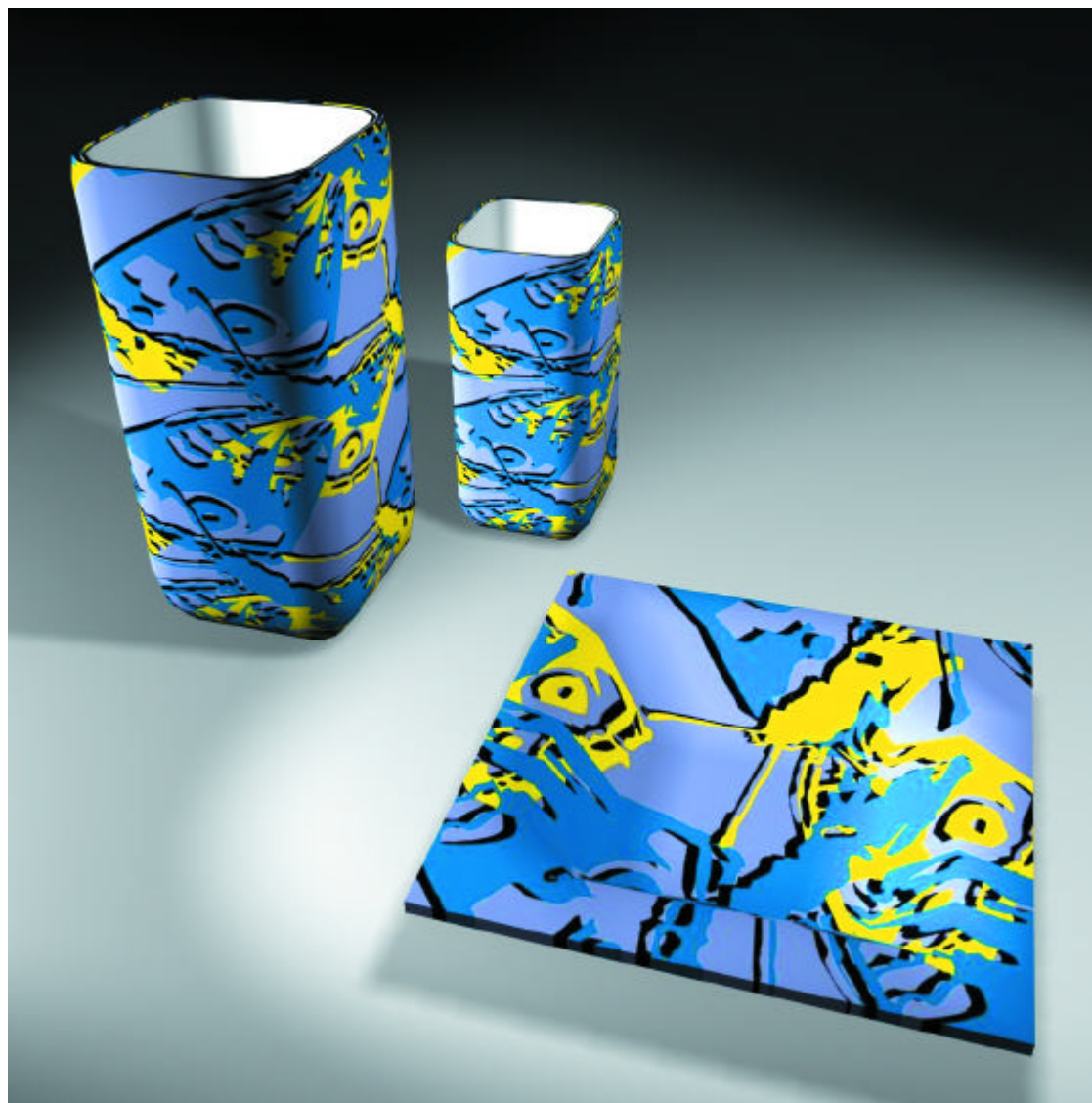


84
Morphopsis albertisi

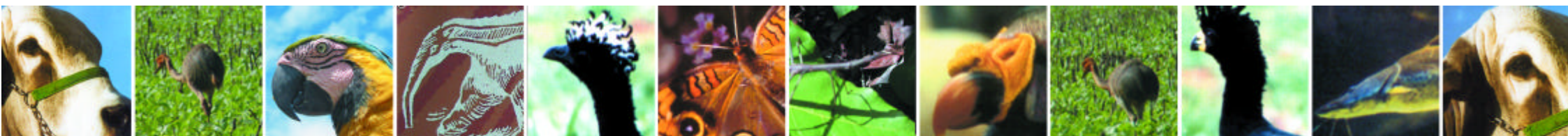




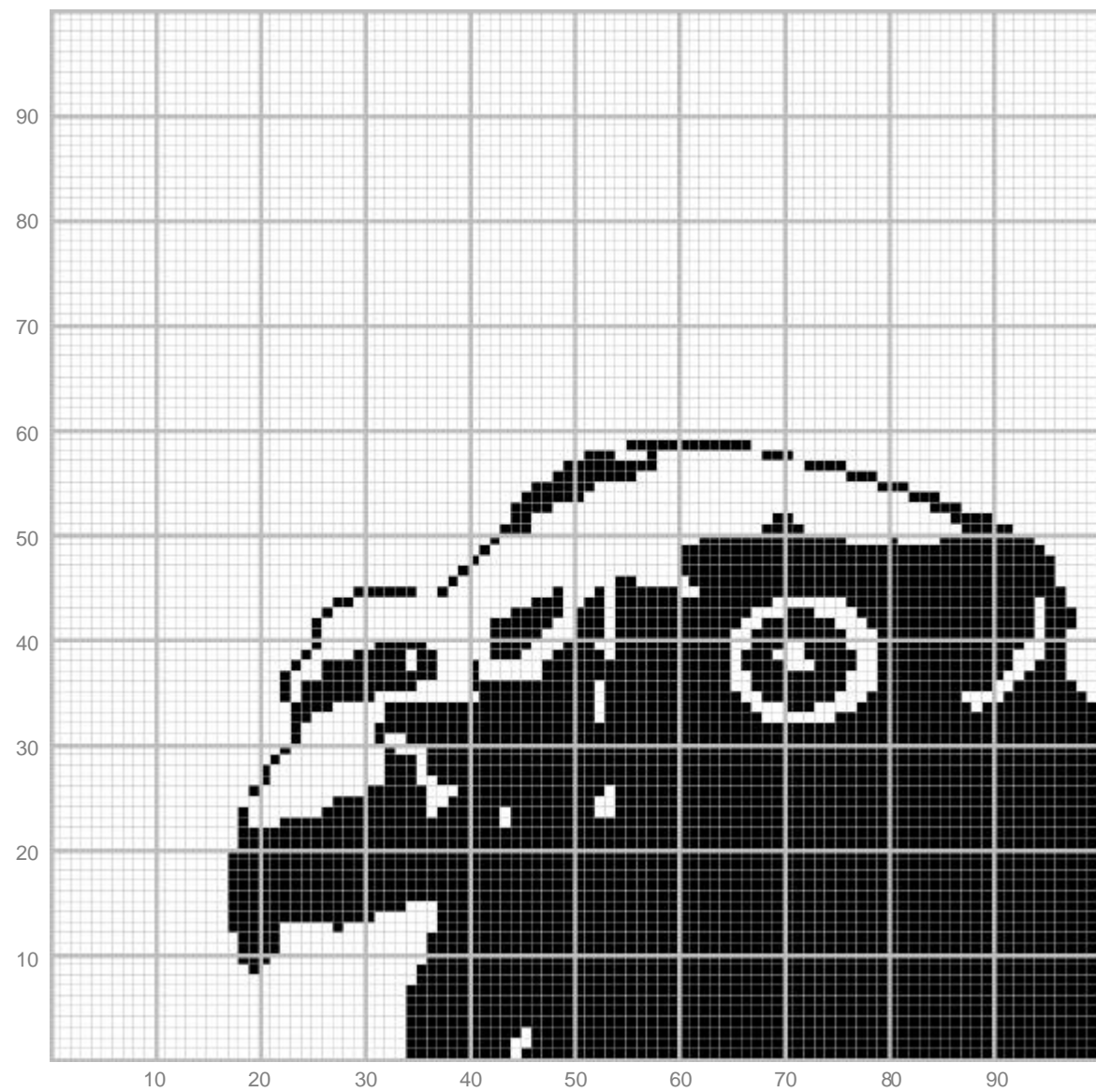




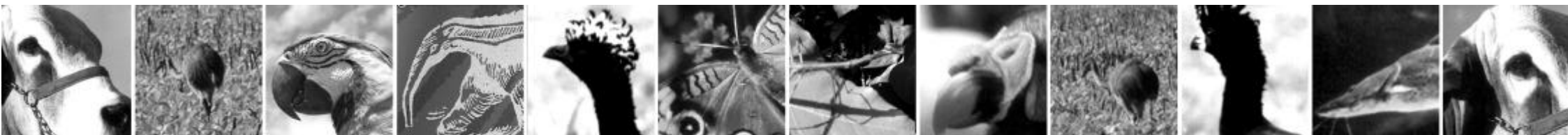
84
Aplicação volumétrica







85
Aplicação têxtil







85
Aplicação volumétrica

